

## SAFETY

### EE Safety

- Enriched environment = more danger
- Accept risk
- Act to reduce the risks:
- Try to imagine every way they can interact with EE

### Safety Concerns

- Injure themselves
- Injure other animals, staff, visitors
- Escape (use the enrichment to escape the enclosure)
- Keeper access (use the enrichment to block a shift door so the keeper can no longer enter either the enclosure or nighthouse safely)

### Common Safety Concerns

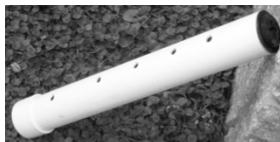
- Body Part Trap (limb, head, antler / horn, digit)
- Physical Restraint
- Strangle (neck, limb)
- Sharp Edges / points
- Ingestion
- Heavy Weights
- Fall
- Mouth Obstruction; Suffocate
- Drown
- Inappropriate Material

### Body Part Trap: Hole Size

- Jaw, head, limb, trunk, antler / horn, digit, etc. stuck in hole or tube.
- Make the holes too SMALL to insert body parts OR too LARGE to get stuck



©2008, Valerie J Hare



©1997, Valerie J Hare

### Body Part Trap: Tube Diameter

- Diameter
  - ✦ Body part becomes stuck inside tube
  - ✦ If they can get their jaws around it they can:
    - + Break it – edges could be sharp or pieces ingested
    - + Get it stuck in mouth



©2007, The Shape of Enrichment

Small enough to become trapped?



©2011, Valerie J. Hare



©2011, Joseph Kiss



©2014, Margaret Whittaker

Safe Method to Tie Perches to Prevent Entrapment (Figure 8)



©2013, The Shape of Enrichment, Inc.

Gaps Not Safe



©2014, Debbie Ng

Physical Restraint: Elk and Rope; Maned Wolf and Bungee Cord



©2012, Katerina



©2007, The Shape of Enrichment

Strangle: Pond Turtle Behavior



©2010, Valerie J. Hare

Strangle: Gorilla, Cockatoo & Frayed Rope



©2012, Mark Kingston-Jones



©2012, Valerie J. Hare

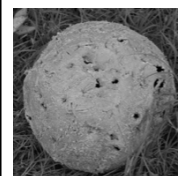


©2007, The Shape of Enrichment

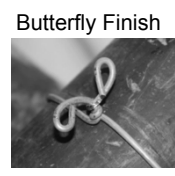
Sharp Edges

- Wire, plastic, PVC, splintered / cracked wood or plastic
  - ❖ can cause cuts, splinters and possibly infection
  - ❖ when PVC, boomer balls, and other hard plastic break, edges are razor-blade sharp
  - ❖ structural integrity compromised

©2014, Margaret Whittaker



©2008, Valerie J. Hare



©2013, The Shape of Enrichment, Inc.



Butterfly Finish

## Ingestion

- Swallowed
  - ❖ Lodged in gut – blockage or torsion (esp. sand, long fibers)
  - ❖ Toxic or poisonous material
  - ❖ Sharp edges or points



Ingestion: Fishing Cat & Cotton Bag

©2007, The Shape of Enrichment

Please NEVER put messy food in something the animal can (but shouldn't) eat.

Materials they can but shouldn't eat include cloth, paper, cardboard, etc. These materials should contain ONLY dry foods like seeds, nuts, pellets, bread

Messy food = anything that can soak into the material (e.g., meat, fish, fruit, dried fruit, etc.)

Messy food goes in:

1. Something the animal cannot eat (e.g., PVC)
2. Something the animal can eat but is OK to eat (e.g., bamboo)

## Paper & Cardboard

- Mouths Glued Shut (Carnivores)
- To Prevent Ingestion
  - ❖ Recommend "wet" food only in non-ingestible feeders
  - ❖ Paper, etc. good for dry food, whole nuts, etc.



©2002, Valerie J. Hare

## Heavy Weights: Macaw with Coconut on Shelf



©2008, The Shape of Enrichment

## Fall: Bear and Swing Support



©2013, Debbie Ng

## Mouth Obstruction; Suffocate

- Mouth Obstruction
  - ❖ can cause tooth damage, prevent eating, abscess, severe distress, and possible suffocation



Mouth Obstruction: Giraffe Target

©2007, The Shape of Enrichment

## Drown: Elephant Calf



©2014, Mark Kingston Jones

## Inappropriate Materials

- Bungee, rope, firehose, chain, etc.
  - ❖ wrapped around neck (strangulation, panic); limbs or digits (become necrotic, amputated, panic); antlers / horns (damage; panic)
  - ❖ teeth can be chipped on chain

Turtle and Rope; Tiger and Thin PVC; Maned Wolf and Flexible Feeder Ball



©2010, Valerie J. Hare



©2009, Valerie J. Hare



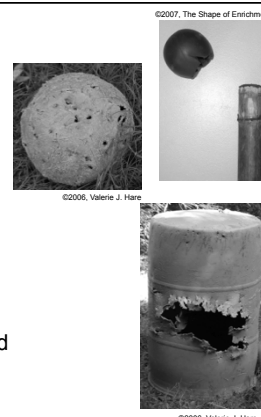
©2007, The Shape of Enrichment

### Some Safe Practices

- What you take in, you take out!
- If you drop it, pick it up NOW!
- File rough edges
- Don't spread your germs
- Don't transmit disease/parasites from one enclosure to another
- Do not compromise the structure of exhibit
- Be able to "undo" whatever you did

### Inspect, Inspect, Inspect!

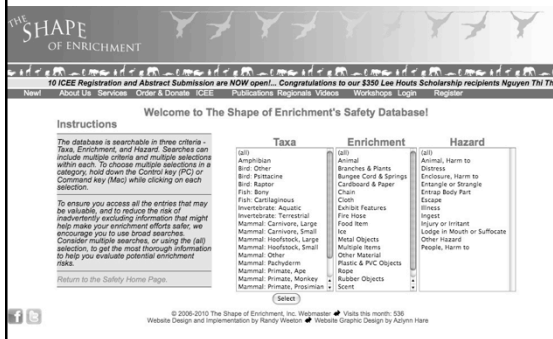
- Wear and Tear of Items
- Cleanliness of Items
- Frayed Material (e.g. rope)
- Unsecured Ends (e.g. Wire)
- Loose Parts
- Be SURE the item you give is approved for THAT individual



Make Sure All Enrichment Is Safe for EVERYONE in Enclosure



### Safety Database www.enrichment.org



PLEASE don't forget your own safety!



### Take Home Message...

Stop  
Think  
Use Common Sense!

